



GW1000-DHPE RSLINX Quickstart.

This document is a summary of how to install the Realport Virtual COM port driver and RSLINX.

The **DataLink GW1000-DHPE** is a gateway between an Ethernet TCP/IP Network and AB's DH+ Network. This cost-efficient solution extends the life of legacy Allen-Bradley PLC5 and SLC5/04s by eliminating the need to upgrade each PLC with an Ethernet processor.

Ethernet Port & DF1 Driver The GW1000-DHPE incorporates an ethernet port and uses Digi's Realport driver to create a tunnel over Ethernet TCP/IP for any existing serial COM port DF1 driver.

The benefit of the GW1000 solution is that there isn't any internal reformation of the serial DF1 protocol, thus eliminating a "BOTTLENECK" of an internal DF1 RS-232 link. The tunneled packet is received by the GW1000 and directly formatted for DH+ transmission, and inversely, a DH+ received packet is immediately placed in an Ethernet TCP/IP packet for transmission to the Realport virtual COM port driver on the PC/HMI/MMI.

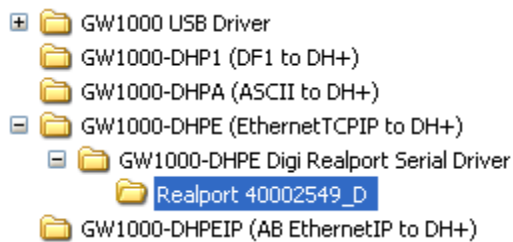
Installing Realport Driver for GW1000-DHPE Operation

Install from CD

From the CD enclosed with the GW1000, use Windows Explorer to locate the folder for the Digi Realport Virtual COM port Driver...

Eg. For CD drive letter "E"

E:\GW1000-DHPE (EthernetTCPIP to DH+)\GW1000-DHPE Digi Realport Serial Driver\Realport 40002549_D



Download from Internet

Alternatively, you may download these drivers from the Digi website

www.digi.com/support/

Click "Drivers" and select product "Digi One IAP". Select Operating system "Windows XP"

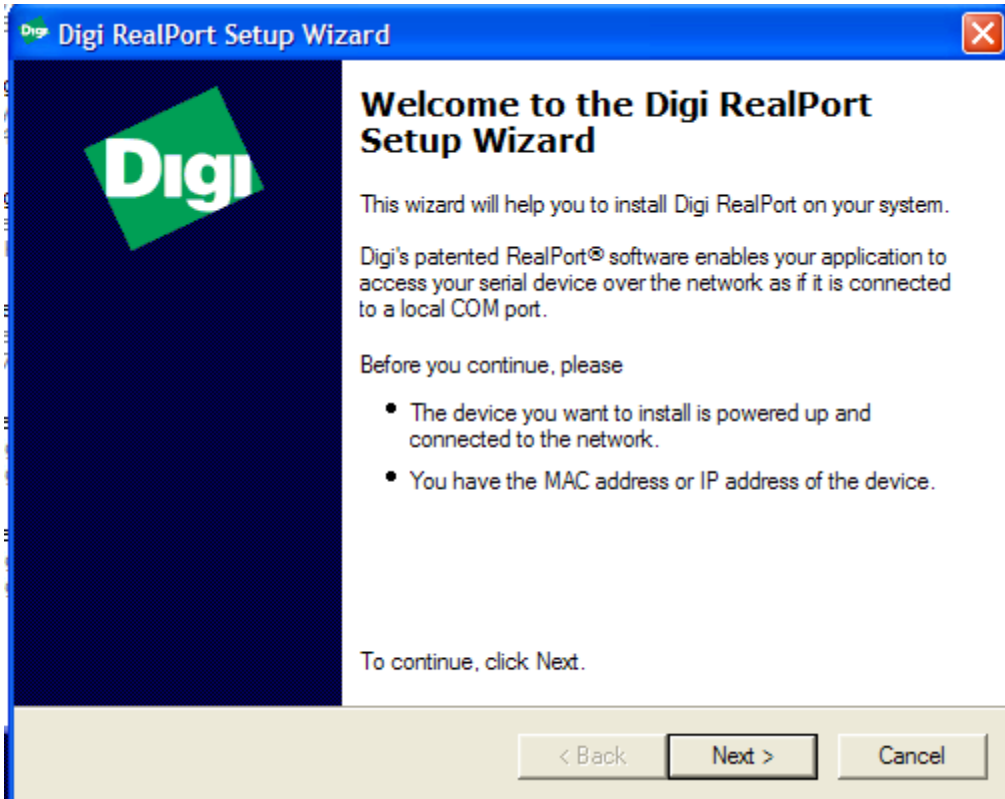
Driver Installation

Double Click the Setup32.exe icon to launch the installation utility.

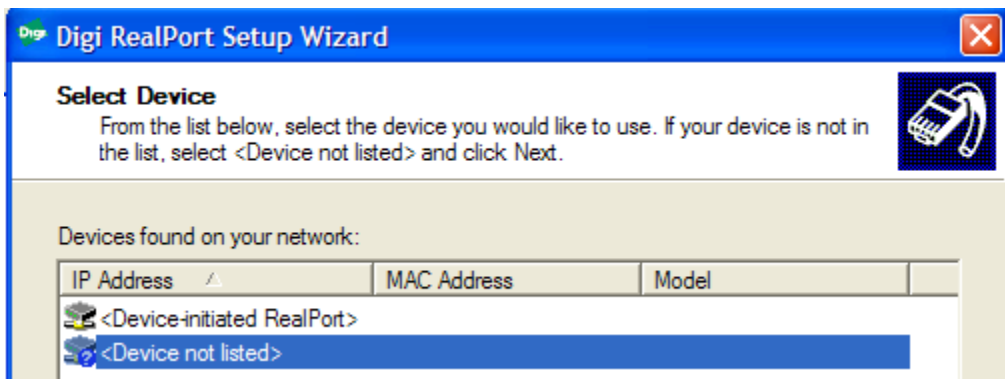


Depending if it is the first time you are starting the wizard or not the startup screen will look as follows. This is the startup screen if RealPort hasn't been run before.

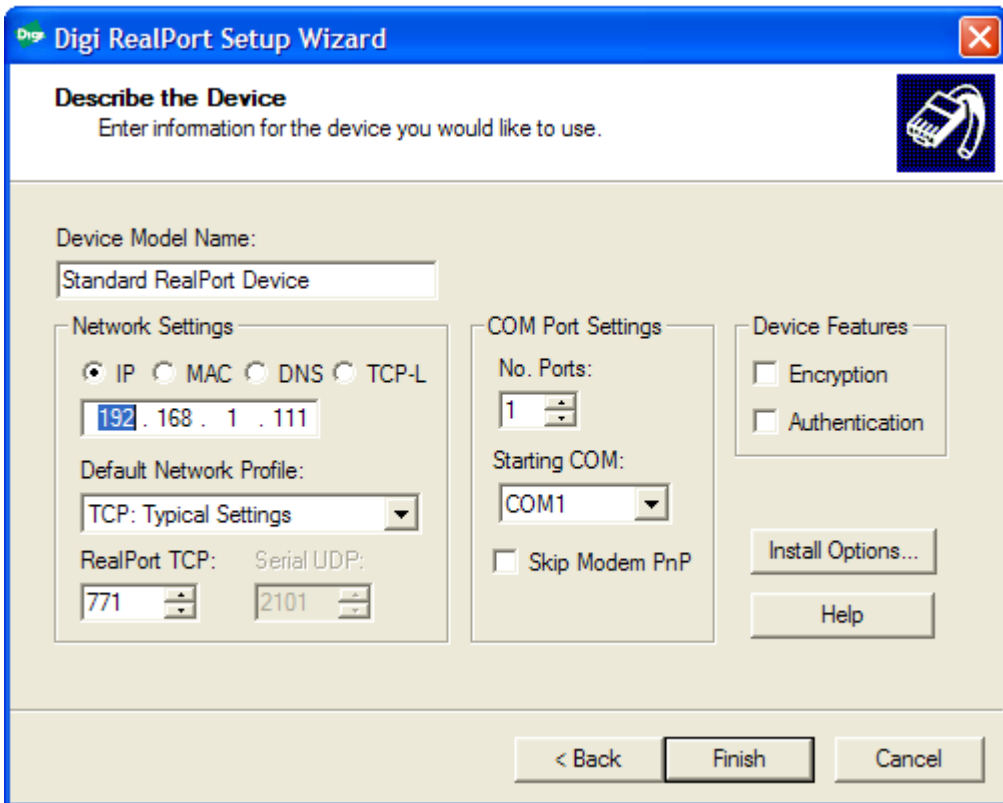
Click Next.



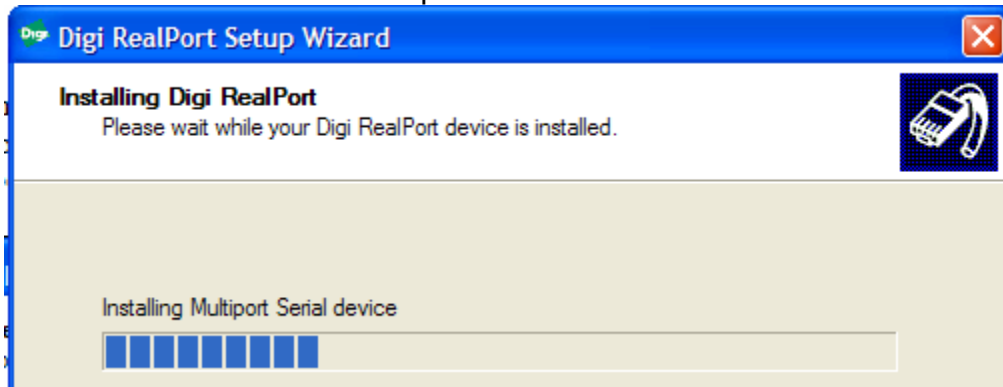
The Wizard will scan your network for any GW1000's on the network. None will be found at this time. Click on <Device Not Listed> and click NEXT.



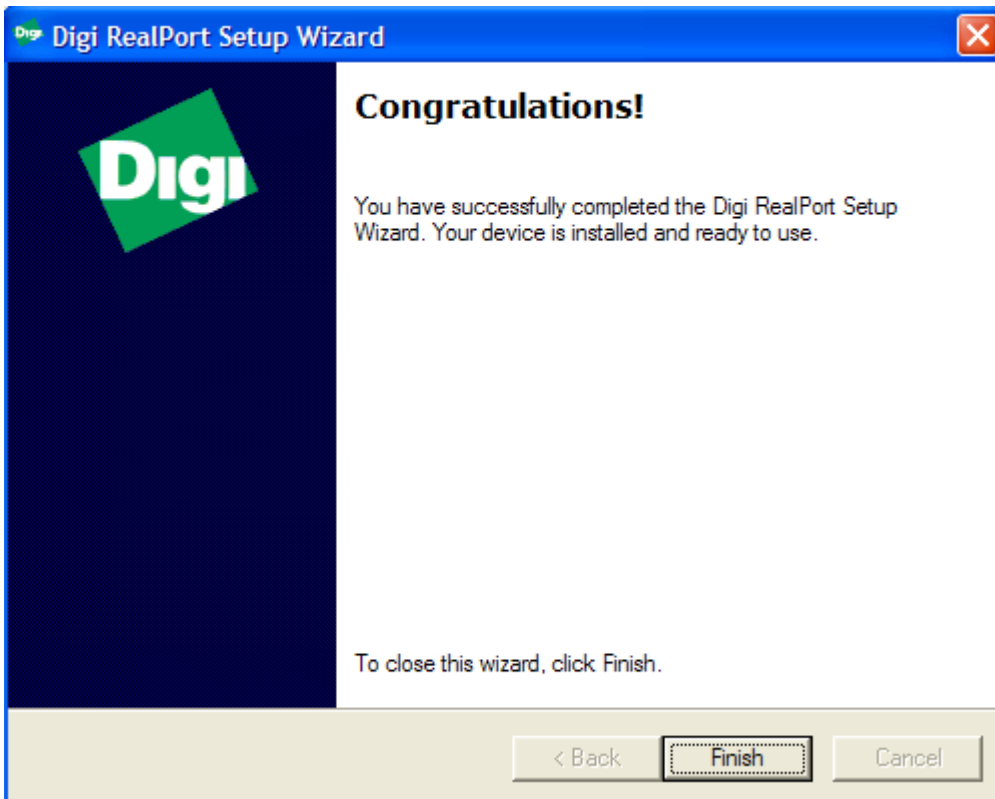
Click the "IP" button under Network Settings and enter the IP address for the GW1000-DHPE. (default address is 192.168.1.111) Select the No. Ports to be 1. You can choose which COM port number you would like to assign to the virtual COM port. The RealPort TCP must be 771. Click Finish.



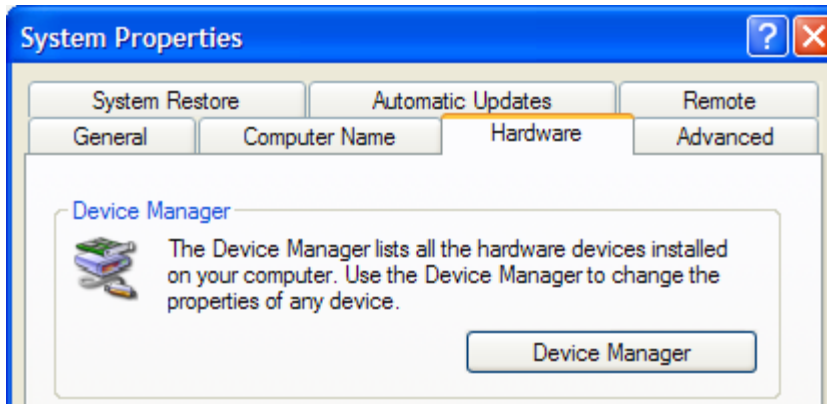
RealPort will install the serial port.



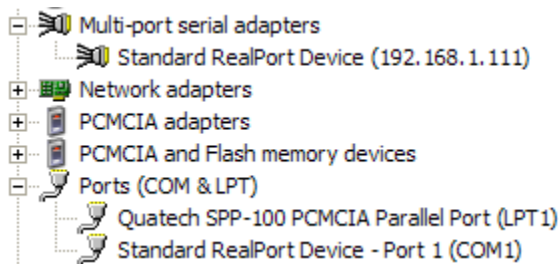
Once complete click Finish.



You may view the GW1000-DHPE virtual COM port using Device Manager under Control Panel → System → Hardware.



The device will be under “Multi-port Serial Adapters” (shows IP address) **and** “Ports (COM & LPT)” (shows COM port number). Under the “Standard RealPort Device” properties under “Multi-port serial adapters,” you can change all the many tunable parameters of the Digi RealPort software. For now you can leave them at defaults.

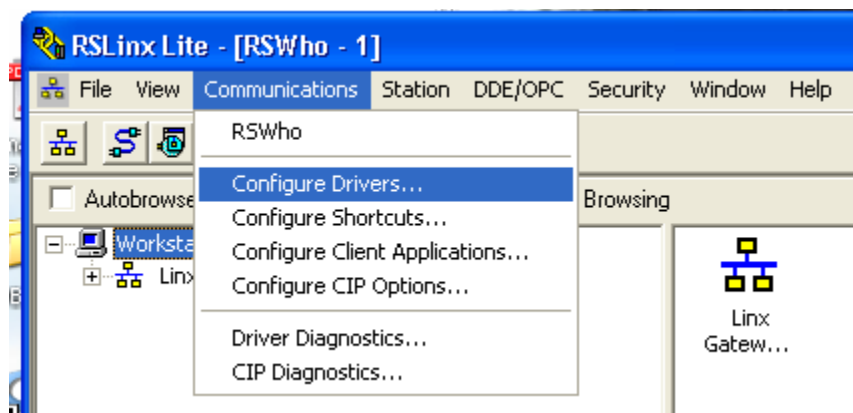


Link to Digi’s RealPort product page.

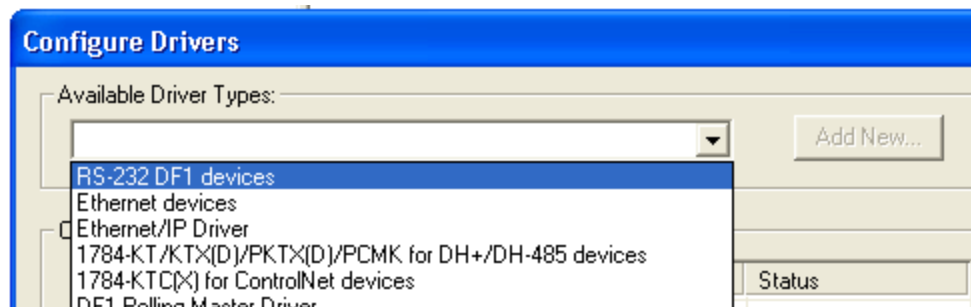
<http://www.digi.com/support/productdetl.jsp?pid=3037&osvid=0&s=261&tp=4>

RSLINX Setup

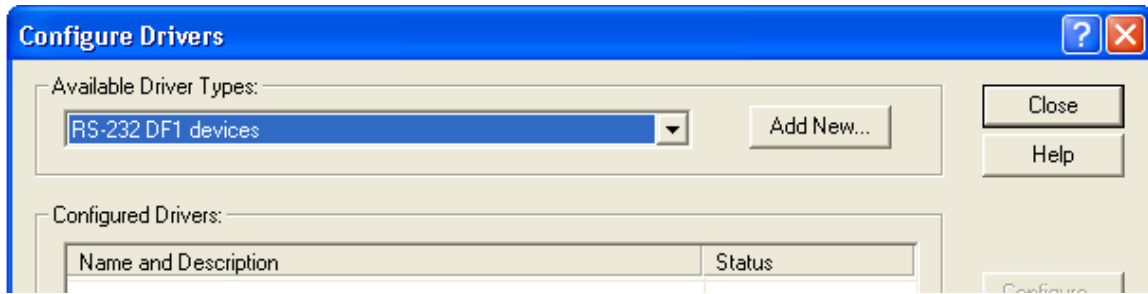
Start RSLINX and go to Configure Drivers



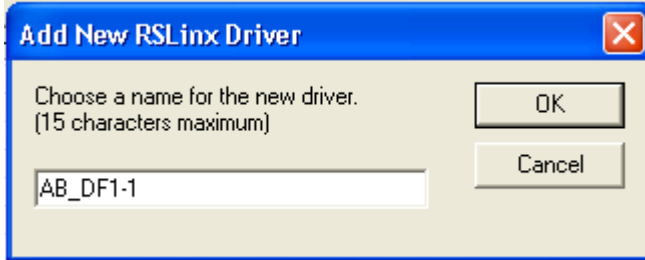
Select RS-232 Devices from the menu pull down.



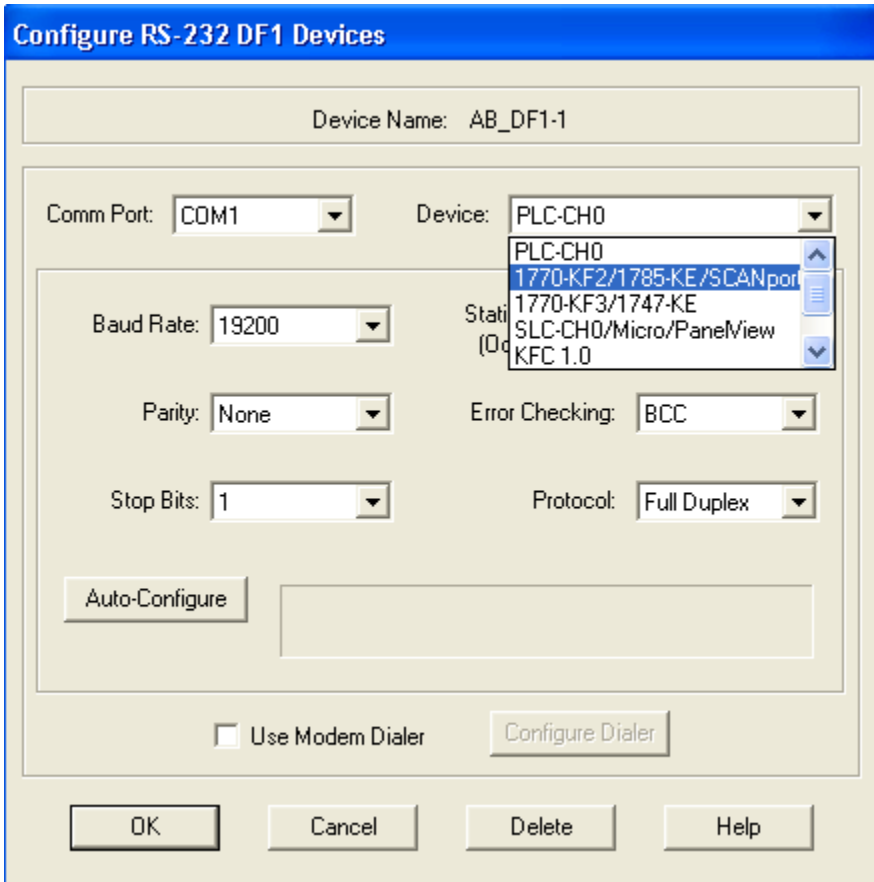
Click on Add New



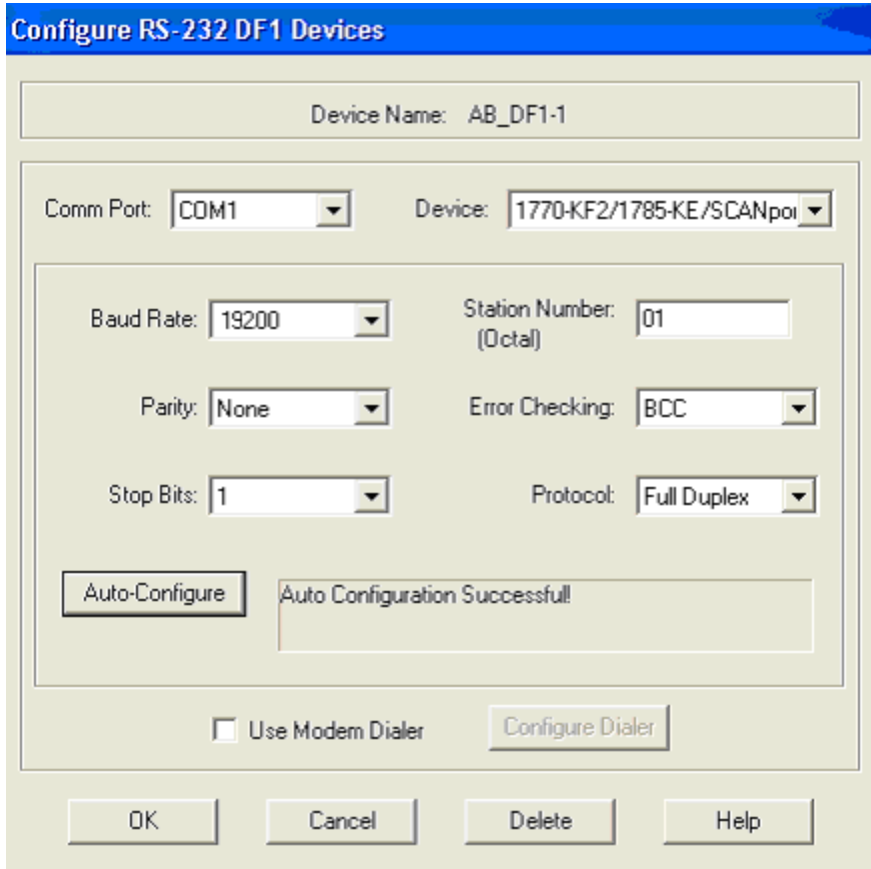
Type in any name or keep as default and click OK



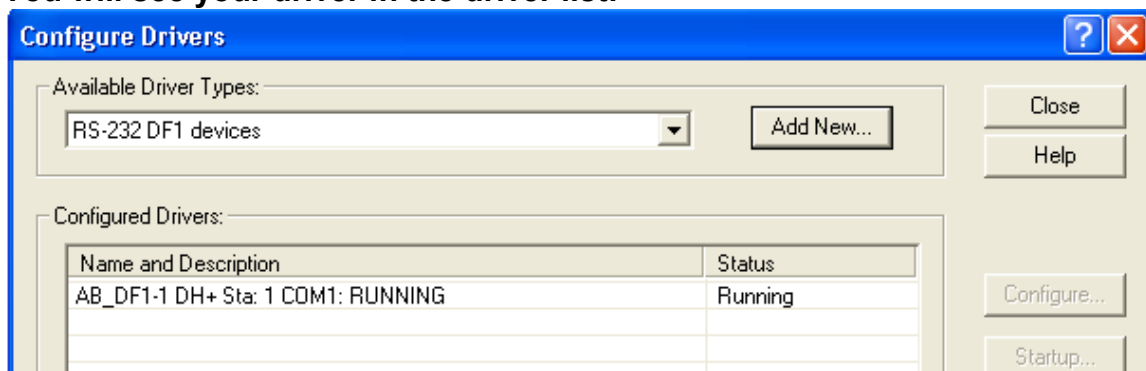
Select the COM Port number you set up in the previous step and select 1770-KF2 as the device and then click on Auto-Configure or enter matching Baud Rate, Error Checking, and Full Duplex (only option supported with current firmware release) and Click Ok.




Successful auto-configure will show as follows. The “Station Number” is the DH+ node address retrieved from the GW1000-DHPE (default 01). Then click OK.

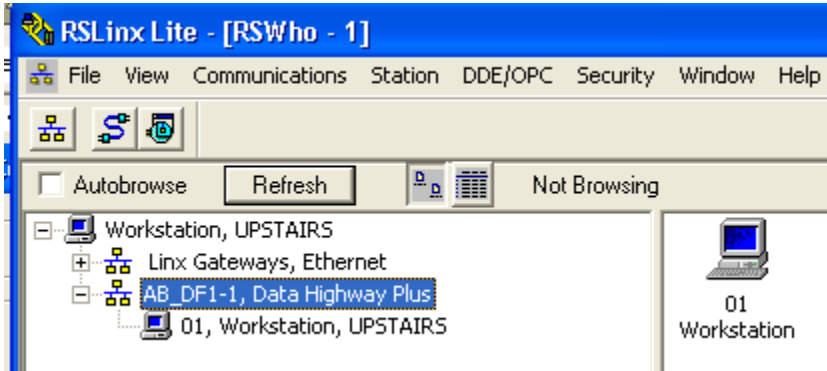


You will see your driver in the driver list:

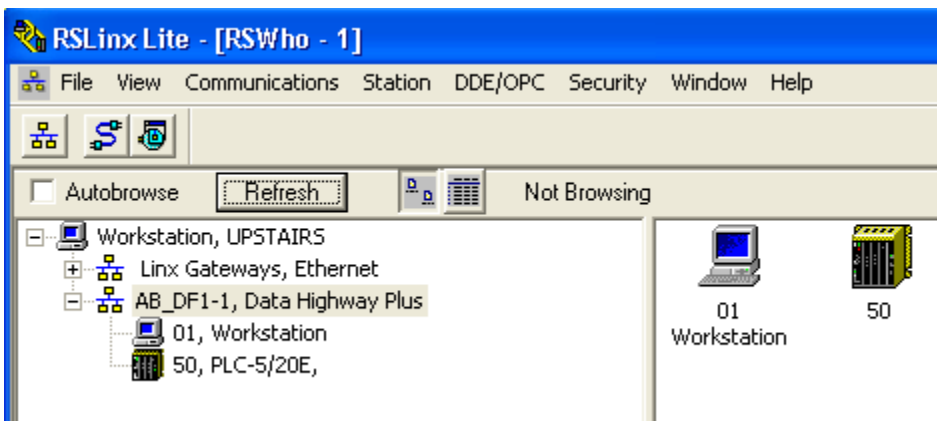


Click Close to get back to the main RSWho menu.

You can now verify your network connections by clicking on the  by your newly added driver and then select REFRESH button. “Autobrowse” is not recommended as it continuously floods the DH+ with a message to every node regardless of whether they are present or not.



Your PLC should show up on the list of stations. The workstation is the address of the GW1000 on the DH+ Network.



Rev. 1.08

DataLink Technologies Gateways, Inc. www.datalink-gateways.com

Tel: (360) 306-5878 / (866) 709-6390

Page 11 of 11