

GW1000-ABEIP Wonderware ABTCP I/O Server to DH+ Application Note

This application note explains how to set up the GW1000-ABEIP via Wonderware ABTCP I/O Server to message multiple DH+ Nodes.

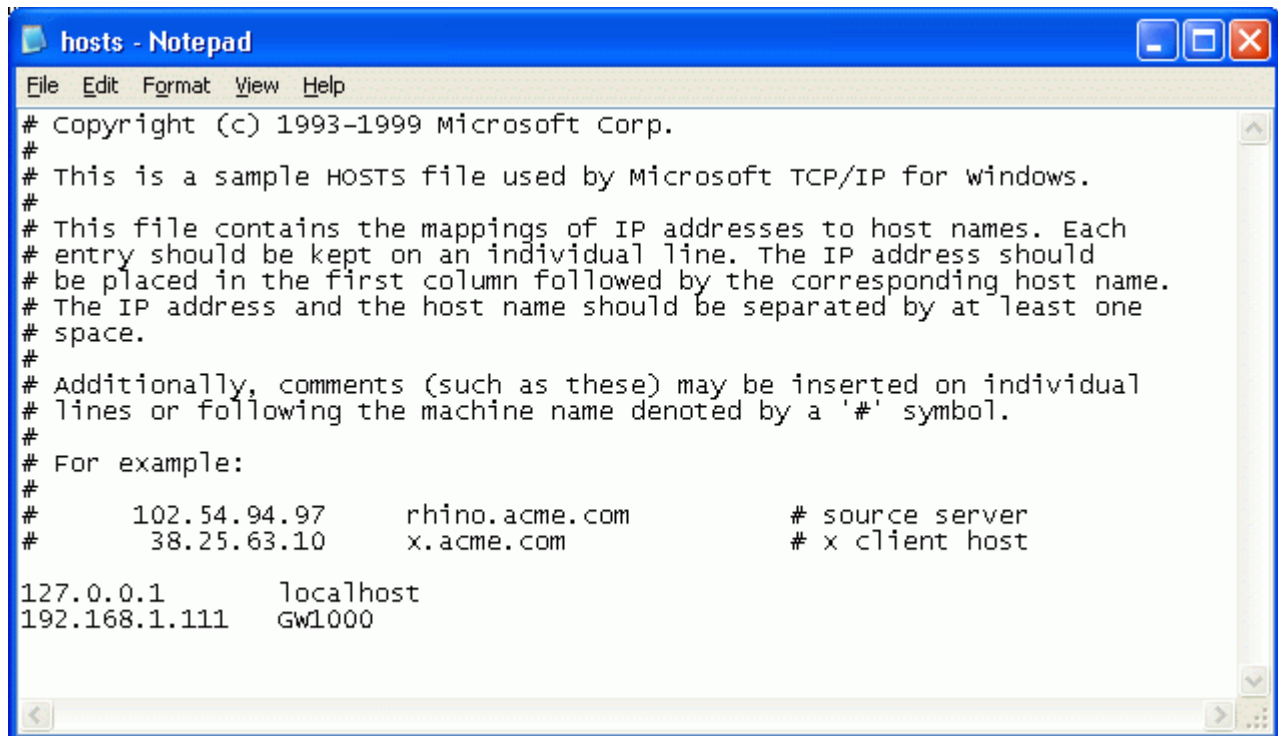
Please also refer to our GW1000 User's Manual available at www.datalink-gateways.com or contact Tech Support at (360) 306-5878 / (866) 709-6390.

Wonderware and the ABTCP IO Server

First, add a line in the Windows hosts file for the GW1000. The default IP address for the GW1000 is shown. If you have changed the GW1000 IP address, use the IP address for your network.

With an editor such as Windows notepad, open

C:\WINDOWS\system32\drivers\etc\hosts (note: this file does not have a '.txt' file extension)



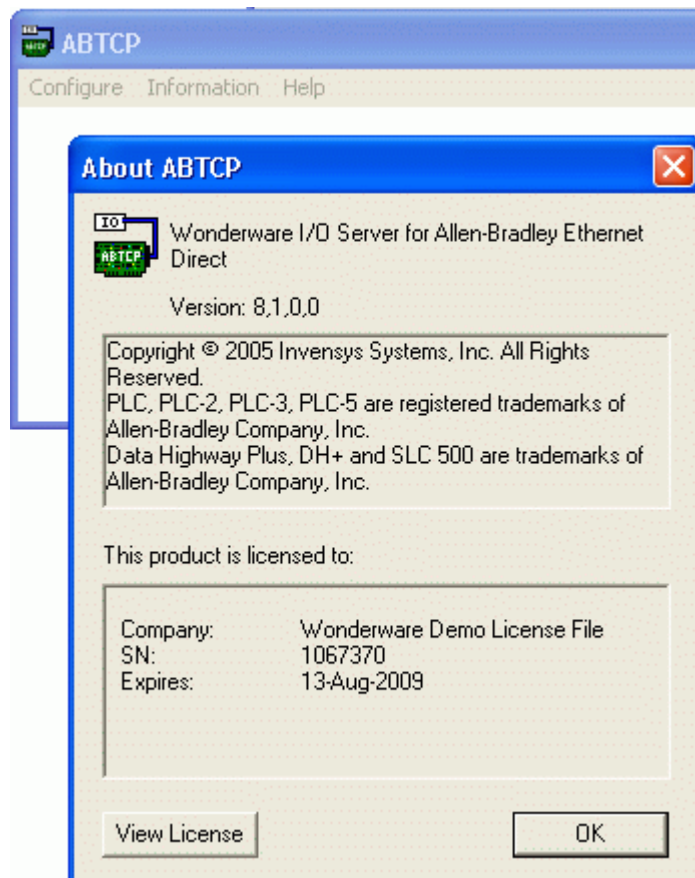
```
File Edit Format View Help
# Copyright (c) 1993-1999 Microsoft Corp.
#
# This is a sample HOSTS file used by Microsoft TCP/IP for Windows.
#
# This file contains the mappings of IP addresses to host names. Each
# entry should be kept on an individual line. The IP address should
# be placed in the first column followed by the corresponding host name.
# The IP address and the host name should be separated by at least one
# space.
#
# Additionally, comments (such as these) may be inserted on individual
# lines or following the machine name denoted by a '#' symbol.
#
# For example:
#
#       102.54.94.97       rhino.acme.com           # source server
#       38.25.63.10      x.acme.com              # x client host

127.0.0.1       localhost
192.168.1.111   gw1000
```

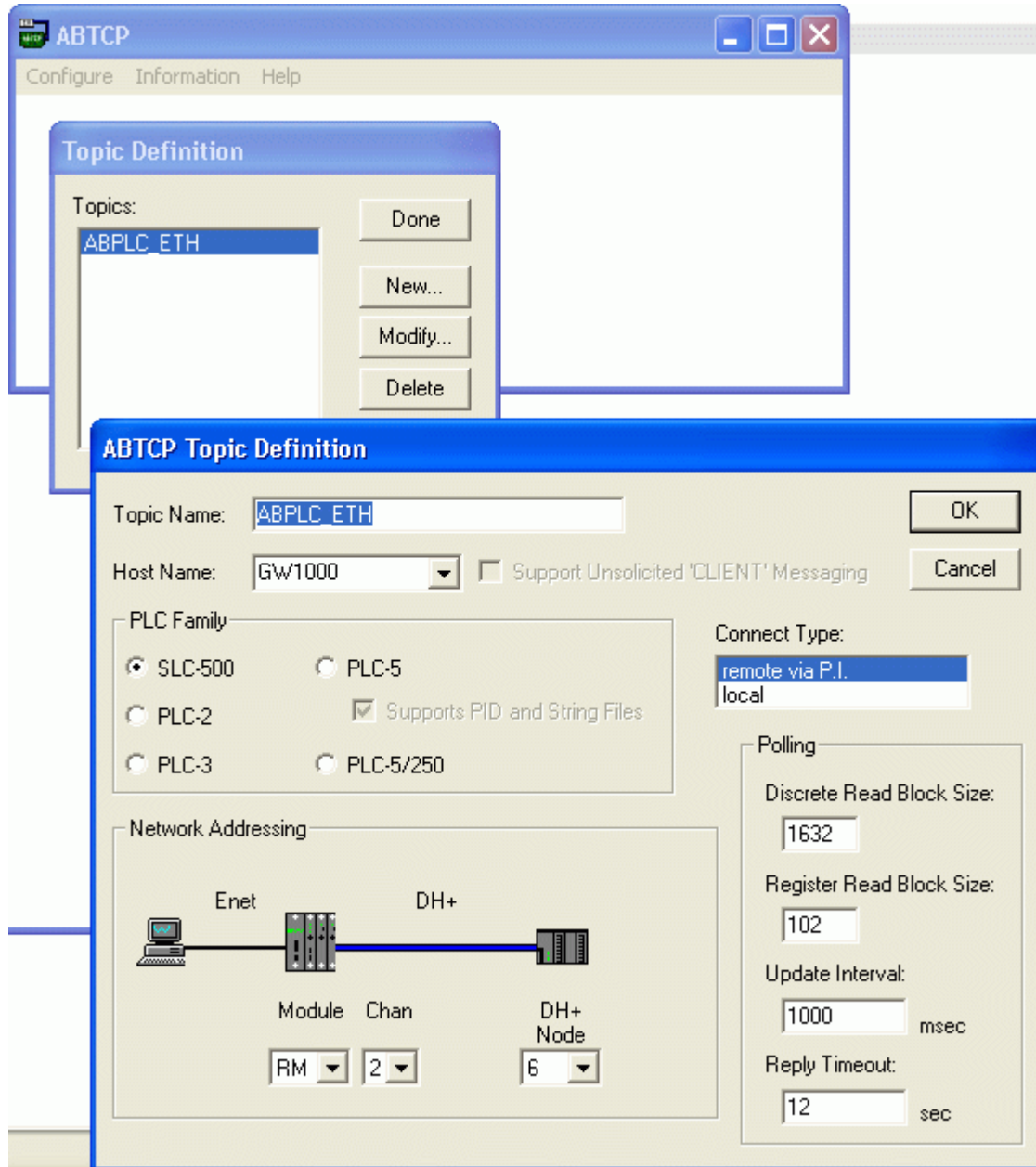
Note, we have installed the Wonderware FactorySuite and the Wonderware I/O Server for Allen Bradley Ethernet Direct version 8.1.0.0. (ABTCP.exe) Also, we have run the OS Configuration Utility for Windows XP SP2 Found here behind a login:
<http://www.isswonderware.com/web/News/NewsDetails.aspx?NewsThreadID=2&NewsID=124>

This is necessary to configure the windows firewall.

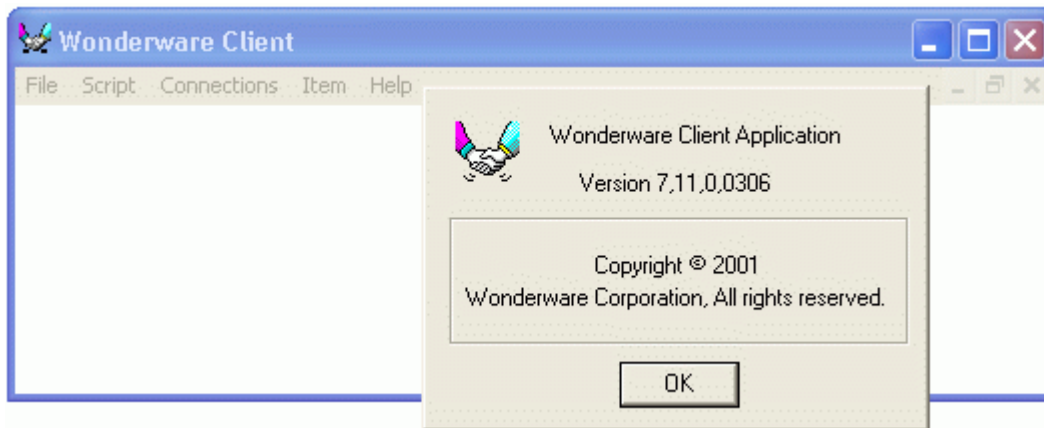
Now run the Wonderware I/O Server for Allen Bradley Ethernet Direct.
(C:\Program Files\Wonderware\IOServer\ABTCP\abtcp.exe)
The following shows the version we are working with.



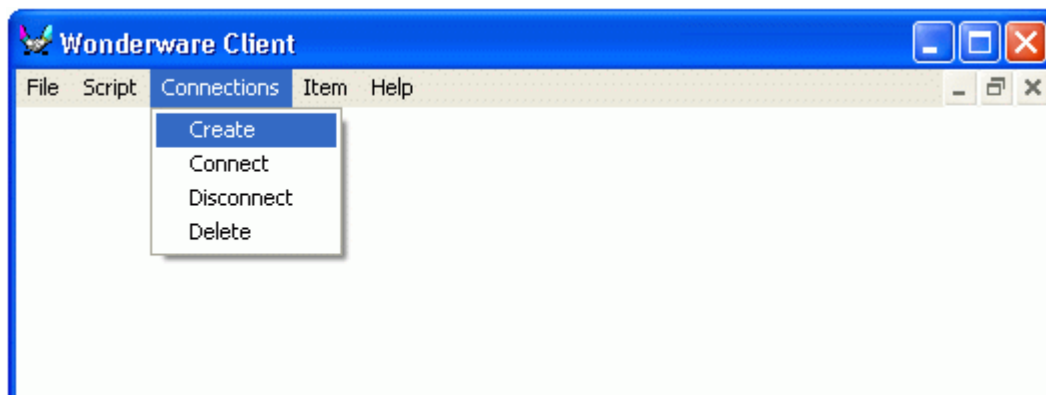
Now choose "Configure -> Topic Definition" and click "New" to create a new definition. Choose a topic name. We have chosen "ABPLC_ETH." Type the Host Name defined in the hosts file above. Choose the Connect Type as "remote via P.I." In this example, we have a SLC 5/04 on DH+ at node address 06 octal. Click "OK" then "Done."



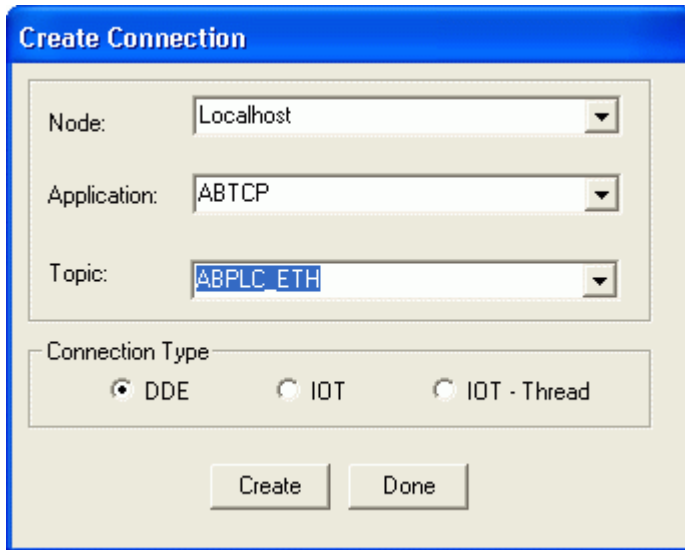
Now start the Wonderware Client. Below is the version we are working with.



Choose "Connections -> Create"

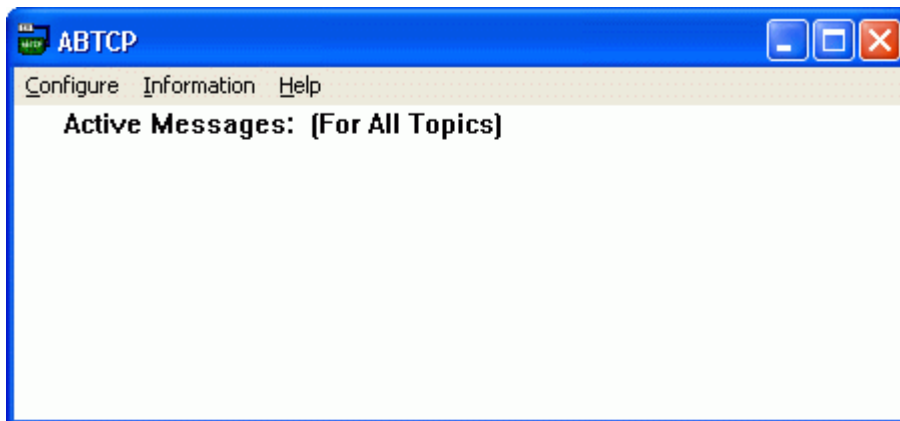
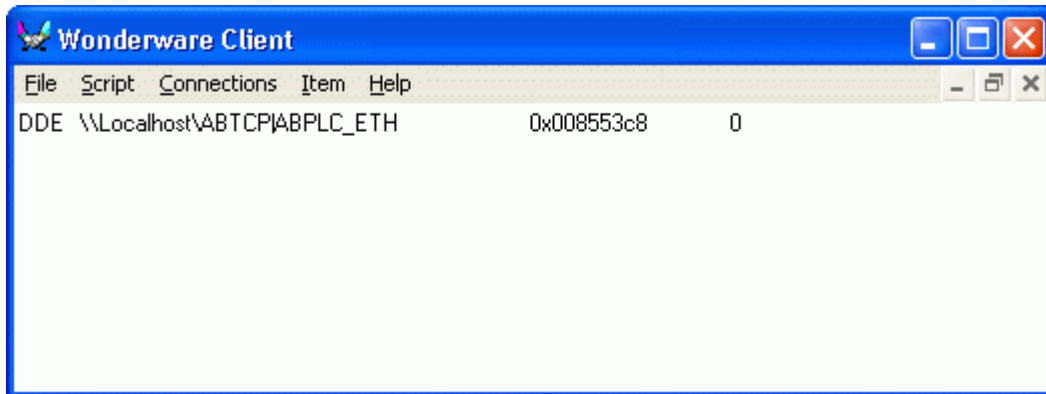


Enter the following values. "ABPLC_ETH" is the name of the topic definition created earlier.

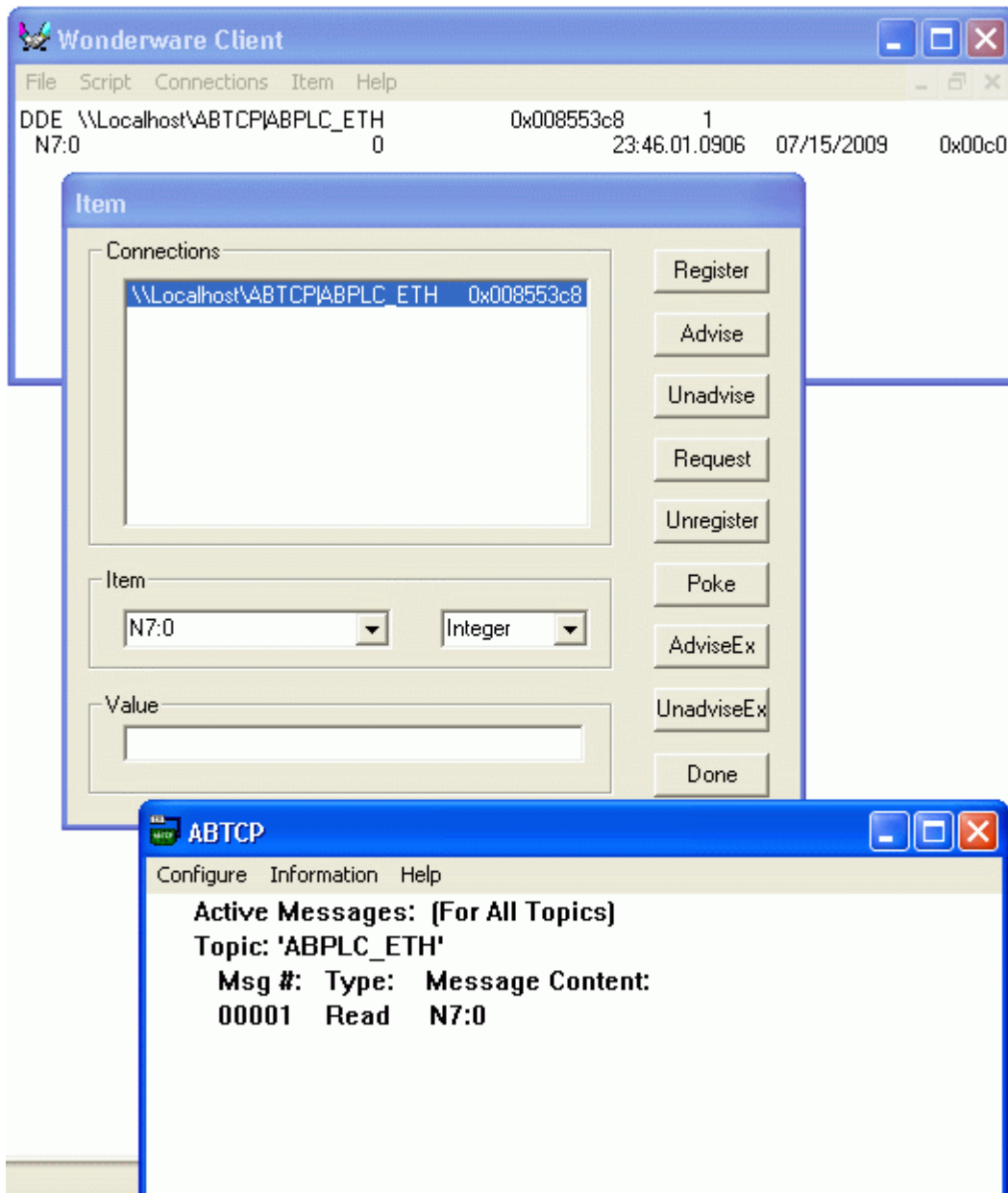


The "Create Connection" dialog box has a blue title bar and a light beige background. It contains three dropdown menus: "Node" set to "Localhost", "Application" set to "ABTCP", and "Topic" set to "ABPLC_ETH". Below these is a "Connection Type" section with three radio buttons: "DDE" (selected), "IOT", and "IOT - Thread". At the bottom are "Create" and "Done" buttons.

Click "Create", then click "Done."



Now click “Item” in Wonderware Client and select a register value to read. Click “AdviseEx” and see the result below. Now the IO Server is polling the SLC 5/04 at DH+ node 06 through the GW1000. There will be activity on the LAN Activity LED as well as the TX and RX Leds.



You can use the “LogViewer” window to diagnose any connection issues.

Rev. 1.08